

## TRANSITEMP-EC IN-TRANSIT TEMPERATURE DATA ACCUMULATOR

### Features

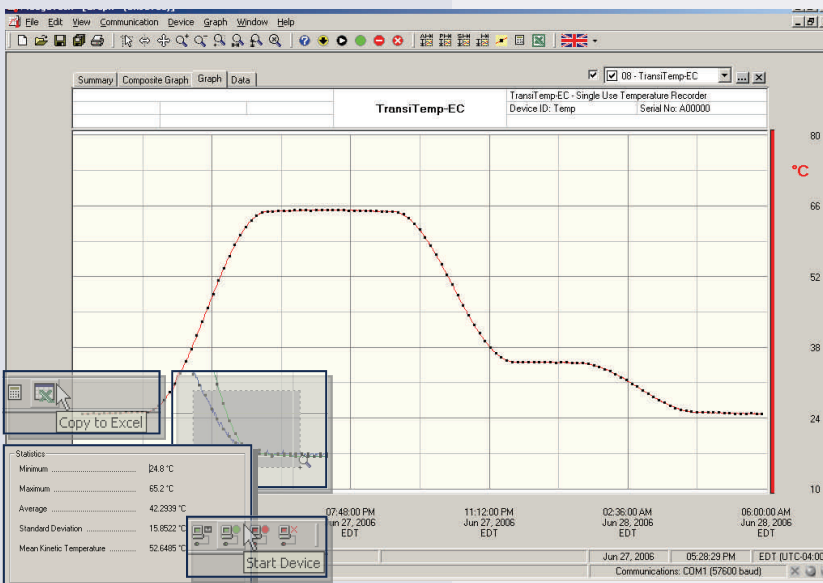
- Single/Multi-use
- Low cost
- Unparalleled quality & performance
- User-friendly
- Convenient size
- Push button start
- User selectable reading rate
- Wide temperature range
- Programmable alarm
- Instantaneous out of range alarm indication
- CE Compliant

### Applications

- Implement HACCP programs
- Cold chain monitoring
- Verify products are stored and shipped at safe temperatures
- Monitor refrigerated cars
- Medical and Pharmaceutical shipment verification
- Replace costly strip chart recorders



The TransiTemp-EC temperature recorder is designed for high volume, low cost in-transit recording. It has a custom molded case with a handle for convenient attachment and comes in single and multi use versions. This compact, portable, easy to use device will measure and record up to 8,191 measurements. The storage medium is non-volatile solid state memory, providing maximum data security even if the battery becomes discharged. The device can be started from a computer or by holding down the recessed push button. Dual LED's provide device status and alarm condition for immediate validation when received. The green LED indicator blinks four times when the device has been started. It continues to blink in ten second intervals while the device is logging. If an alarm condition occurs, the red LED indicator blinks in ten second intervals. The red LED blinks four times when the device stops taking data. The TransiTemp-EC makes data retrieval quick and easy. Simply plug it in to an empty COM or USB port and the data can be offloaded and analyzed/archived with our powerful software.



**EC2 Link Data Recorder Software** displays temperature data in an easy to use graph.

The Windows®-based software package allows the user to effortlessly collect, display and analyze data. A variety of powerful tools allow you to examine, export, and print professional looking data with just a click of the mouse.

# TRANSITEMP-EC SPECIFICATIONS\*

<b>Temperature Sensor:</b> Semiconductor	<b>Temperature Alarm:</b> Programmable temperature alarm with high and low limits selectable in software; When logged data reaches or exceeds either limit, red LED blinks every ten seconds
<b>Temperature Range:</b> -20 to +70°C	<b>Activity Indicator:</b> The green LED blinks every 10 seconds to indicate device is logging. The red LED blinks when an alarm condition exists.
<b>Temperature Resolution:</b> 0.1°C	<b>Marking Feature:</b> While logging hold the push button for 2 seconds to data and time stamp data point
<b>Accuracy:</b> ±0.5°C (-10 to +40°C), ±1.0°C (-20 to +70°C)	<b>Battery Type:</b> 3V lithium coin cell included, 2 year shelf life, <b>factory replaceable</b>
<b>Usage:</b> Single/Multi-Use versions available	<b>Battery Life:</b> 90 days typical at 25°C, 5 minute reading rate
<b>Memory:</b> 8,191 readings (>85 days at 1 reading/15 minutes)	<b>Computer Interface:</b> PC serial (interface cable required); 38,400 baud
<b>Reading Interval:</b> 1 reading every 5 seconds to 1 every 30 minutes, selectable in software	<b>Software:</b> Windows 95/98/ME/NT/2000/XP/Vista based software
<b>Start Time:</b> Pushbutton start or software programmable immediate start or delay start up to thirty days in advance.	<b>Operating Environment:</b> -20 to +70°C, 0 to 90%RH non-condensing
<b>Data Format:</b> Date and time stamped °C, °F	<b>Dimensions:</b> 1.7" x 2.6" x 0.6" (44mm x 67mm x 16mm)
<b>Time Accuracy:</b> ±2 minute/month at 25°C	<b>Weight:</b> 0.9 oz (25 g)
	<b>Material:</b> ABS plastic
	<b>Approvals:</b> CE

**BATTERY WARNING:** FIRE, EXPLOSION, BURN HAZARD. DO NOT OPEN BATTERY. DISPOSE IN FIRE, HEAT ABOVE 212°F, EXPOSE CONTENTS TO WATER, RECHARGE, PUT IN BACKWARDS, MIX WITH OTHER BATTERY TYPES - MAY EXPLODE OR LEAK AND CAUSE PERSONAL INJURY.

## SOFTWARE FEATURES

<b>Multiple Graphs:</b> Simultaneously analyze data from several units or deployments; easily switch to a single data series	<b>Statistics:</b> Calculate averages, min, max, standard deviation, and mean kinetic temperature with the touch of a button
<b>Real-Time Recording:</b> Collect and display data in real-time while continuing to log	<b>Export Data:</b> Export data in a variety of common formats, or switch to Excel® with a single click
<b>Graphical Cursor:</b> One click displays readings by time, value, parameter or sample number	<b>Calibration:</b> Automatically calculate and store calibration parameters
<b>Data Table:</b> Instantly access tabular view for detailed dates, times, values, and annotations	<b>Logger Configuration:</b> Easy set up and launch of data loggers with immediate or delayed start, preferred sample rate, and device ID
<b>Scaling Options:</b> Autoscale function fits data to the screen, or allows user to manually enter their own values	<b>Communications:</b> Automatically sets up communications port, or lets user select configuration
<b>Formatting Options:</b> Change colors, line styles, plotting options, show or hide channels quickly	<b>Printing:</b> Automatically print graphical or tabular data

\*SPECIFICATIONS ARE SUBJECT TO CHANGE WITHOUT NOTICE. SPECIFIC WARRANTY AND REMEDY LIMITATIONS APPLY.

## ORDERING INFORMATION

<u>Model</u>	<u>Description</u>	<u>Price (U.S.)</u>
TRANSITEMP-EC	Single Use In-Transit Temperature Recorder	Call for Pricing
TRANSITEMP-EC-MULTI	Multi Use In-Transit Temperature Recorder	Call for Pricing
IFC103	Software, manual and RS232 interface cable for EC Series	Call for Pricing
NIST	N.I.S.T. Calibration Certificate	Call for Pricing
Battery Not User-Replaceable		

### ASK ABOUT OUR OTHER DATA ACCUMULATORS

Temperature	Pulse/Event/State
Humidity	Low Level Current
Pressure	Low Level Voltage
pH	RF Transmitters
Level	Intrinsically Safe
Shock	Spectral Vibration
LCD Display	

For Quantity Discounts call 302-750-8554 or email [info@ecsquared.net](mailto:info@ecsquared.net)

**E**squared Inc.